

Technical Issues

- 1) The text of the article should be editable, prepared in MS Word (format: docx), standard A4 format pages (210 x 297 mm).
- 2) Page margins: 2,5 cm (for all four sides).
- 3) Footnotes, only if needed to explain something should be in Times New Roman 10pt.
- 4) For JEL codes visit: <http://www.aeaweb.org/jel/guide/jel.php>

Reference Style

- 5) Please use HARVARD CITATION STYLE (see attachment).
- 6) Please list all references in alphabetical order. Only references used in the text can be used in the final list of references (bibliography).

Tables

- 7) Tables must be editable, prepare in MS Word (format: docx).
- 8) It must fit to the article page – they cannot exceed the size 110x185
- 9) Tables should be inserted and mentioned in the text e.g. (see Tab. 1)
- 10) Referencing source to the tables should be placed directly below the table (Times New Roman 10 pt)
- 11) Always mention the measures (e.g., in %, in USD).

Table 1. Example of the table

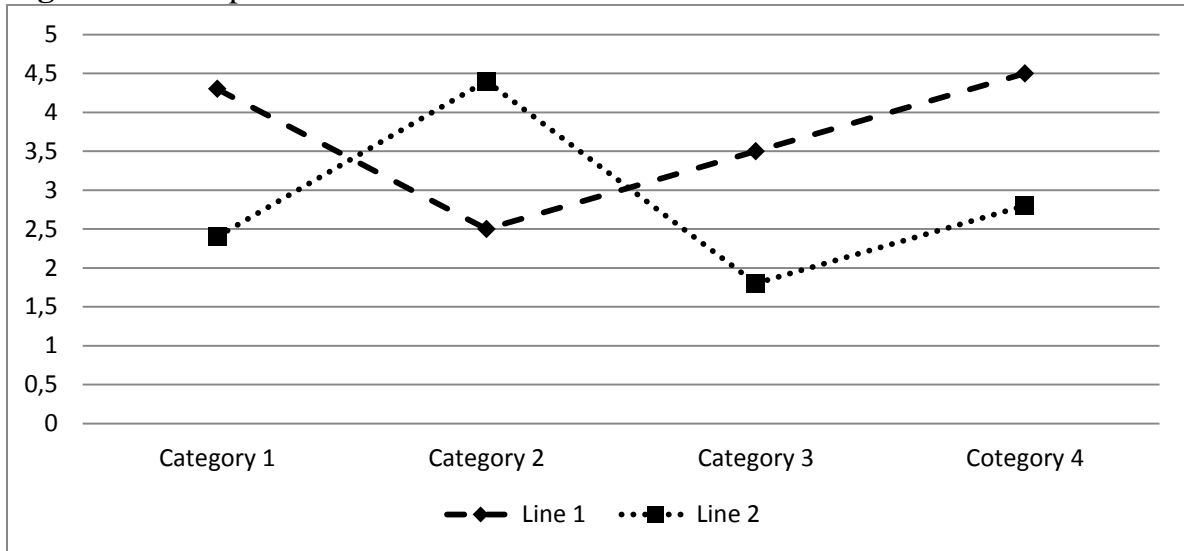
Source: own study based on...

Source: UNCTAD 2011, World Investment Outlook, p.114).

Figures (diagrams, charts, graphs and line drawings)

- 12) Figures should be inserted and mentioned in the text e.g. (see Fig. 1).
- 13) The source should be provided to all figures at their bottom (Times New Roman 10 pt).
- 14) The notes or explanations of the figures should be placed at their bottom.
- 15) Figures should fit the article page – they can not exceed the size 110x185 mm.
- 16) Always mention the measures (e.g., in %, in USD).
- 17) **Don't use colours!**
- 18) **Use celar (white) background in all figures. Dont use any shadows. Dont use spaciatl (3D) chaarts or diagrams, only simple ones (2D) are accepted).**
- 19) **When use chart it must be editable (drawn in MS Word, or attached in MS Excel format: xls.)**

Figure 1. Example of the chart



Source: own study based on...

Source: UNCTAD 2011, World Investment Outlook, p.114).